

CLAY SEALING

CHINESE BURIAL TOMB



100-100000-100000

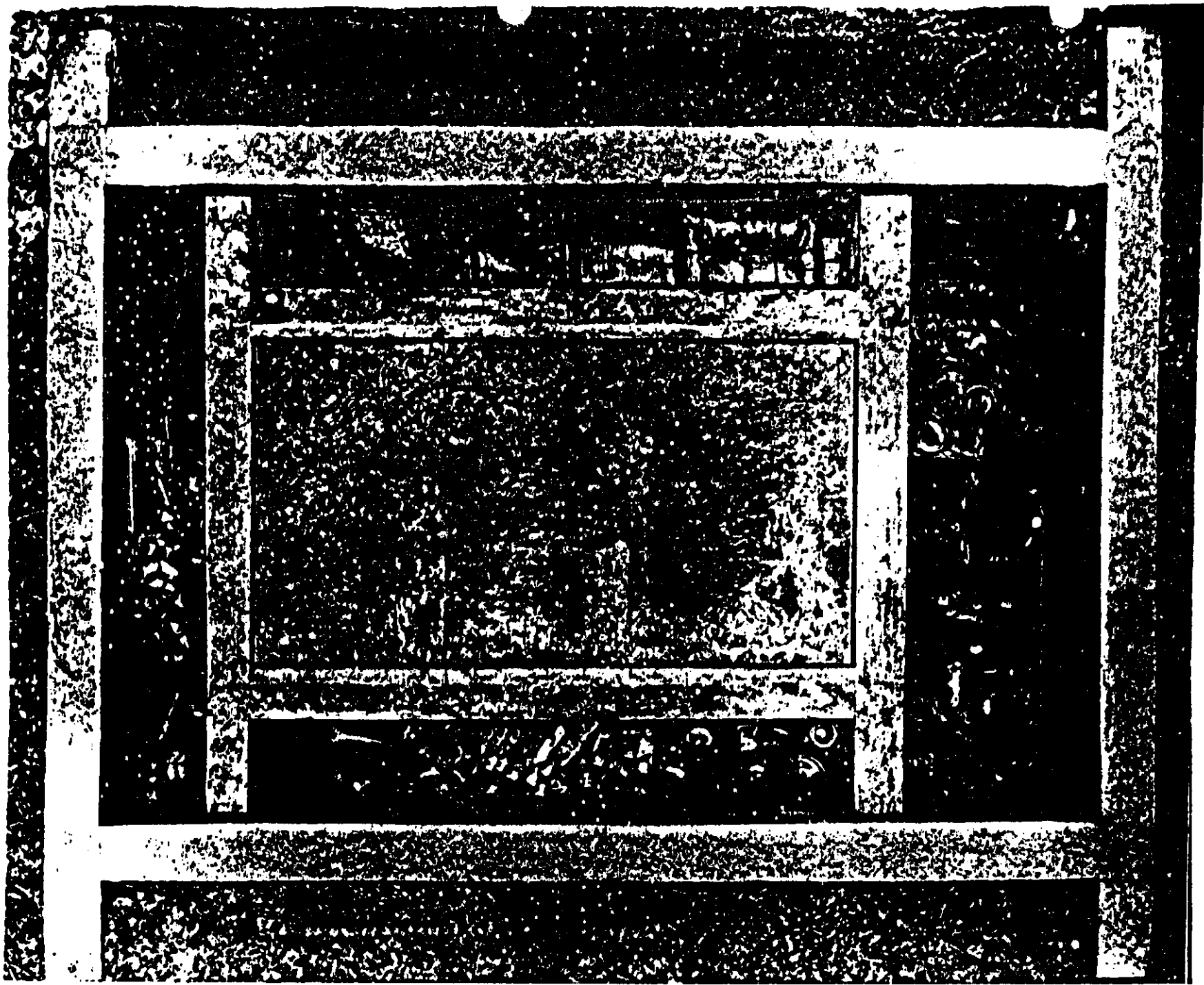
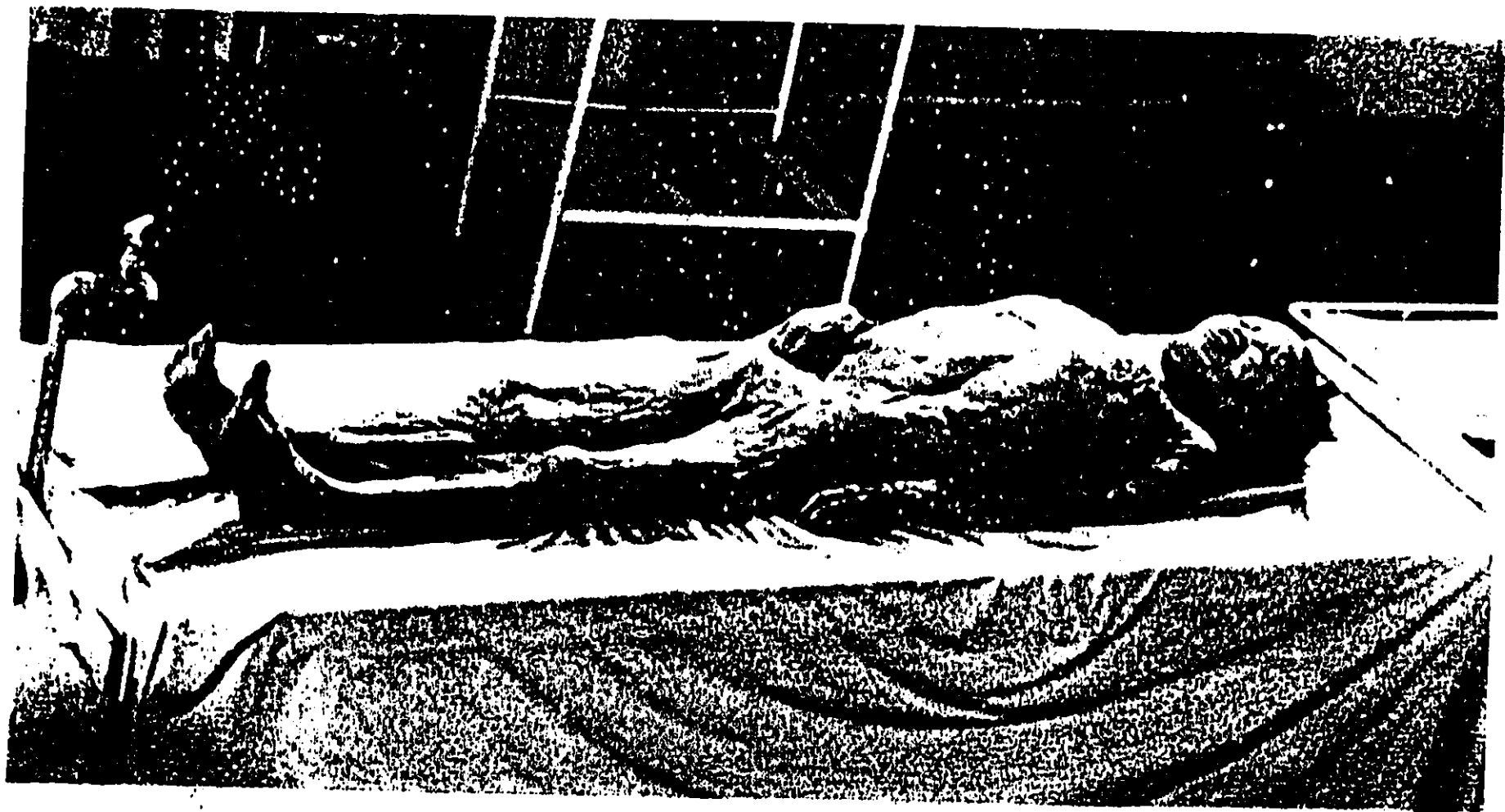




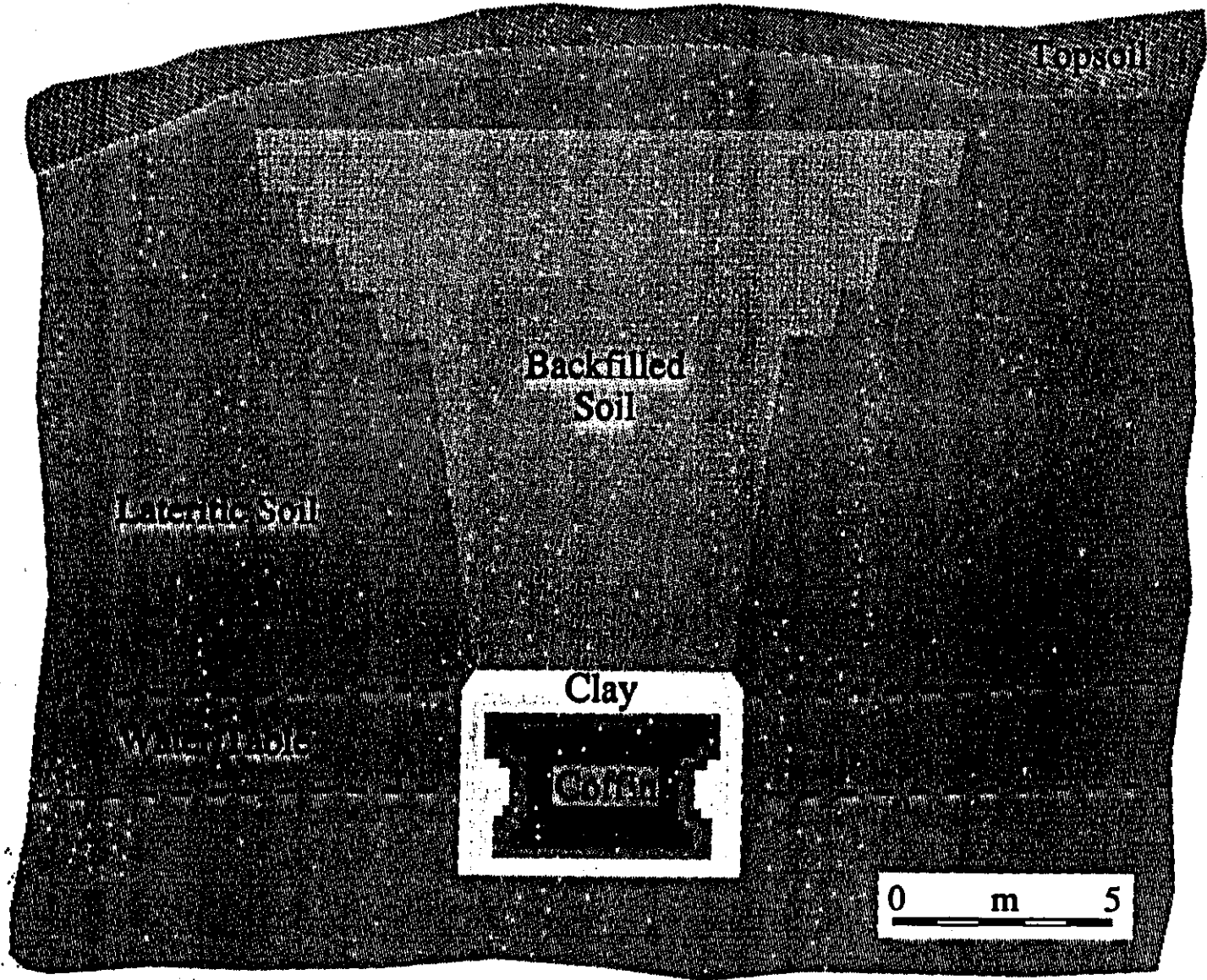
FIGURE 10: THE MIDDLE COFFIN WITH LACQUER PATNTING--(3)



图版五：尸体全貌



2100-year-old burial site at Mawangtui, China



Topsoil

Backfilled
Soil

Laticite Soil

Clay


Coffin

0 m 5



CONCLUSIONS

BURIAL TOMB

-  Clay is an effective long-term sealant for >2,000 years, keeping water and gases from both entering and exiting the coffin structure.